

# MSPCA Western MD Zoom FAQ's

## Logging In:

If you have any issues logging in, immediately contact the MSPCA office at (410) 940-6581. The Training is being offered through Zoom. Please be prepared to login and be connected for an **ON TIME** start.

Start Time: 8:00 a.m.

End Time: 12:30 p.m.

Step 1: Click the link provided in your confirmation email to access the Seminar

Step 2: If unable to access computer audio to listen, access audio by phone using the call-in number provided

Step 3: Follow prompts:

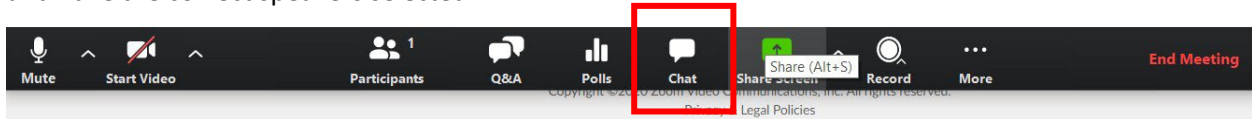
- Enter webinar ID followed by #
- **When logging in be sure to include your FIRST and LAST name in the sign in box.**

## Reporting Technical Issues (Screen view; Audio)

**Initial Connection Issues:** Please contact the MSPCA Office at 410-940-6581.

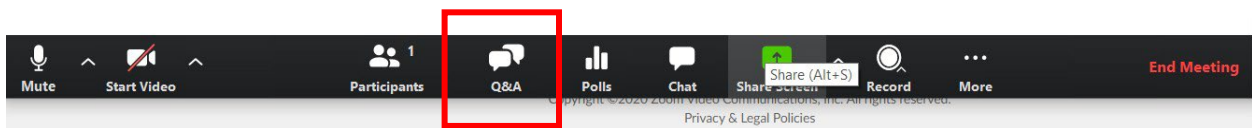
**Losing Internet Connection:** If you lose internet connection, check your device, and reconnect to the internet. Zoom will automatically reconnect you once it recognizes internet service has been reconnected.

**Audio Issues:** Click on the Chat box and let us know what issue you are having. Make sure you *join audio* and have the correct speakers selected.

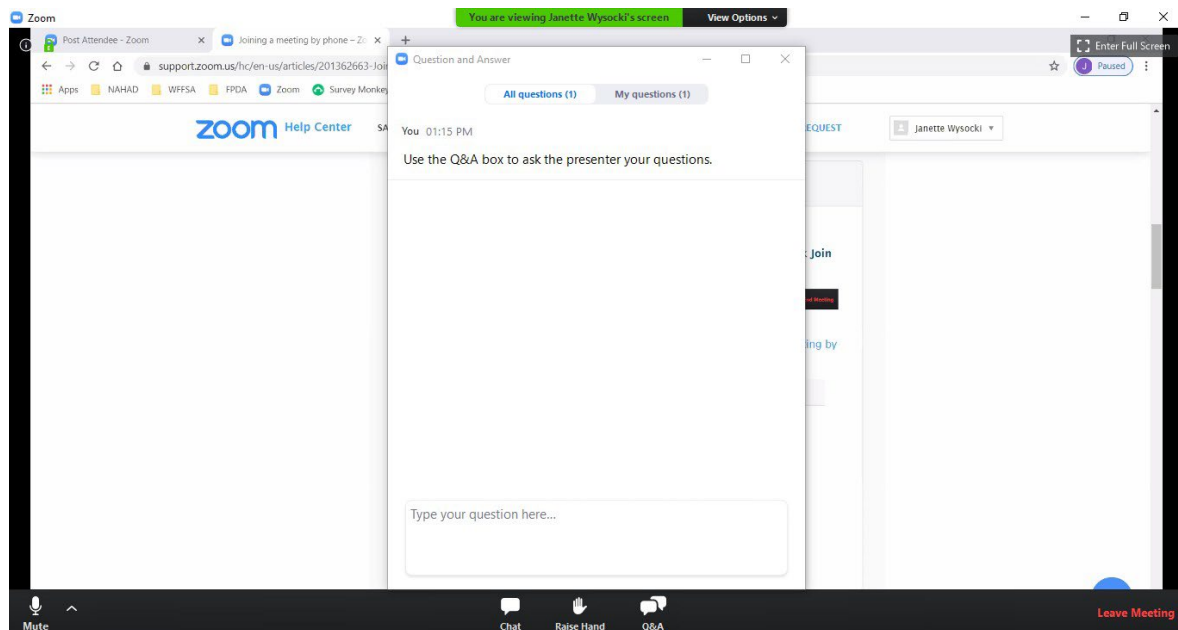
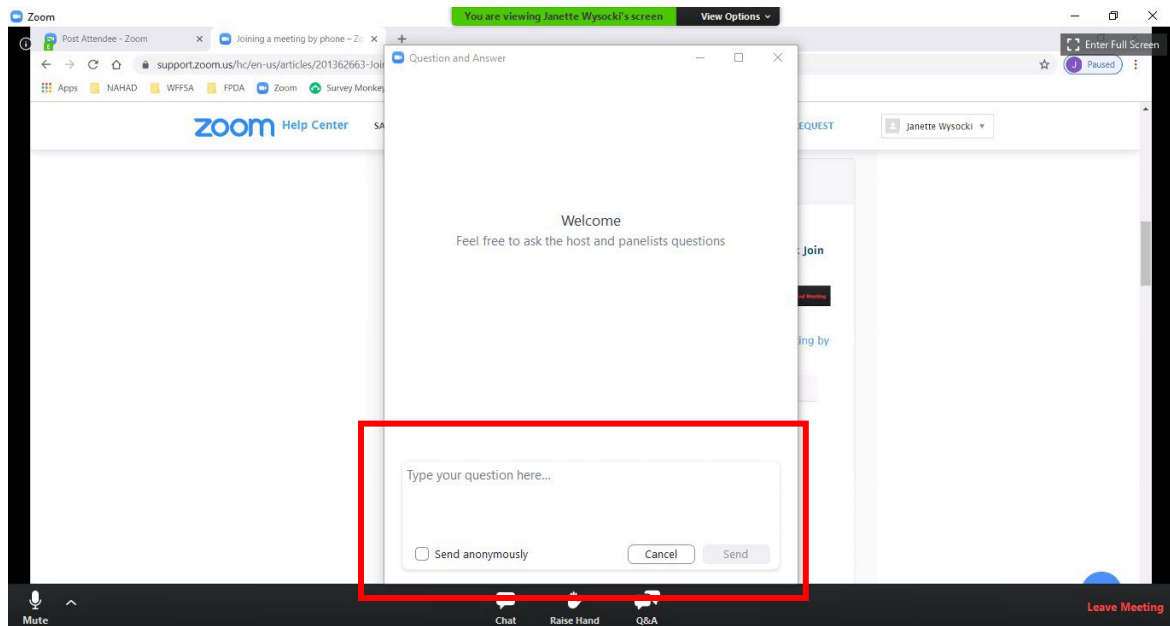


## Asking Questions:

If you need to ask the speaker a question during the presentation, please use the Q&A box. The Q&A box is found in the Zoom toolbar here. Click on Q&A.



You will see a box pop up that looks like below. Type your question in the box and click send.



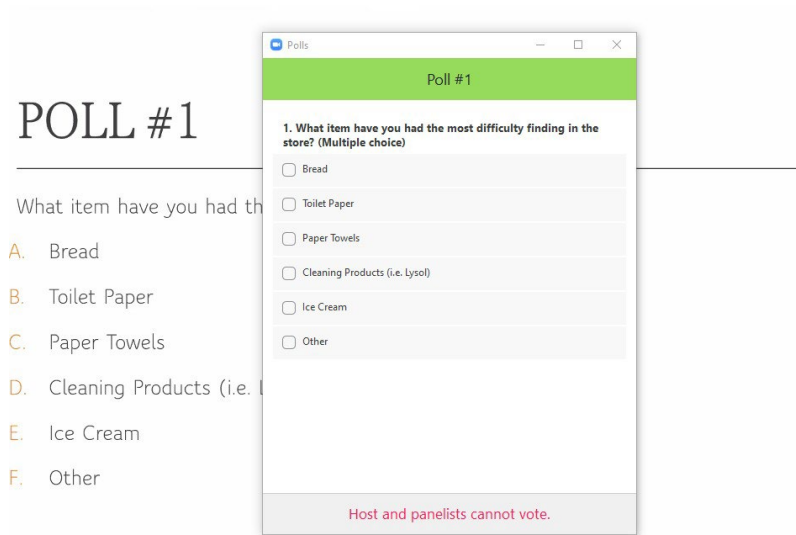
You will be able to view all attendee questions here. Some questions will get typed responses; others will be answered live.

### **Online Polling Activity:**

To promote attendee interaction each presenter has been asked to incorporate one or more polling questions into their presentation. So please ensure you have limited distractions during the two Zoom sessions.

Participation in polling is easy – when a Poll appears on your screen (Image 1), click on the correct or most appropriate response. The Host will display responses from participants on the screen (Image 2).

**IMAGE 1:** Respond to a Polling Question



**Image 2:**

